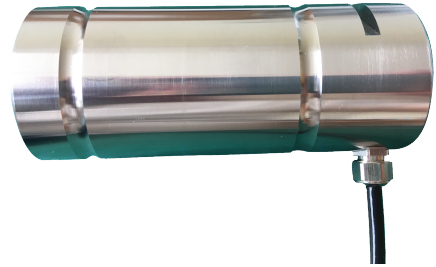


LMP Load Measuring Pin

Type LMP

Features

- Ranges 500kg (5kN) to 1500 tonne (15000kN)
- Stainless steel construction
- Environmentally sealed to IP67
- Anti-rotation plate supplied if required
- Can be supplied with integral connector
- Versions available with integral conditioning
- Dimensions to suit special requirements
- Many special design options available



Applications

- Crane overload protection
- Winch force monitoring
- Cable and wire dynamometers
- Hoist overload protection
- Mooring load tension measurement

Description

The standard range of load measuring pins are designed for general use. They are a simple and versatile type of load cell that are used in a large variety of applications such as cranes, winches, hoists, load shackles and bearing blocks. They are easily installed into machines by replacing any existing load bearing pin to provide accurate, real time monitoring of load forces.

Often a custom designed loadpin is requested, which fits exactly into the existing construction. No modifications or changes in the construction are necessary. Just report the load in tonne or kN as well as the dimensions stated on the next page and we will check and calculate whether the existing pin can be replaced by a load measuring pin.

Machined from high tensile stainless steel and normally supplied complete with an antirotation plate, our load measuring pins are built to exacting standards and proof loaded to 150% of normal rated load. Our standard load pin range covers ratings between 500kgs and 1500 tonne, and can be provided as mentioned on this data sheet or can be modified to meet a particular application requirement.

The LMP series can be supplied on its own or combined with our extensive range of instrumentation to provide a complete load monitoring system.

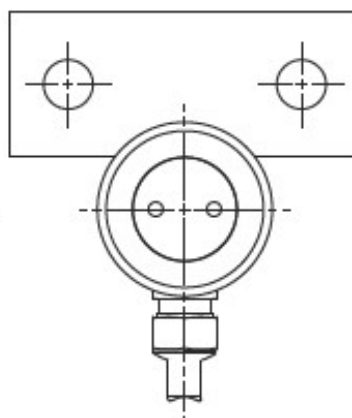
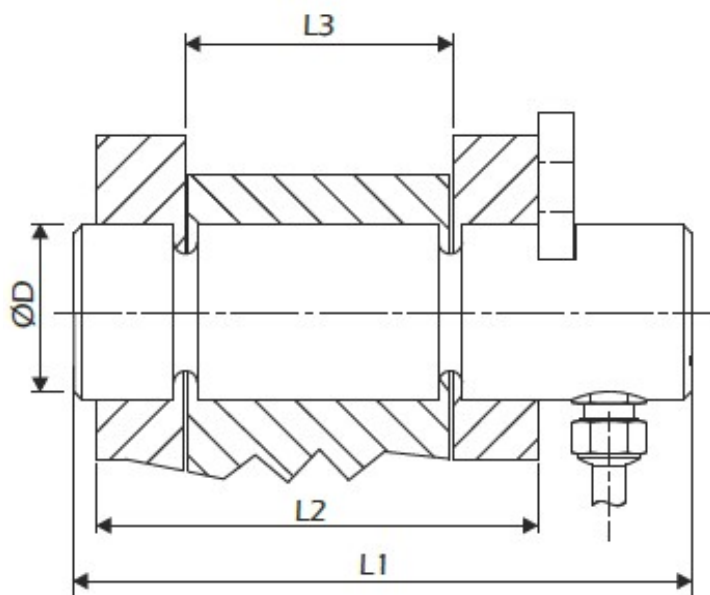
Available options

- Integral signal conditioning
- Special electric connections
- Anti-rotation plate
- Submersible versions

Specifications

Rated load	0,5 to 1500 tonne
Proof load	150% of rated load
Ultimate breaking load	>300% of rated load
Output	1,5 mV/V at rated load (nominal)
Non-linearity	<±1,0% of rated load (typical)
Non-repeatability	<±0,1% of rated load
Excitation voltage	10 Vdc recommended, 15Vdc maximum
Bridge resistance	350 Ω
Insulation resistance	>500 MΩ @ 500 Vdc
Operating temperature range	-20 to +70 °C
Compensated temperature range	-10 to +70 °C
Zero temperature coefficient	<±0,01% of rated load/°C
Span temperature coefficient	<±0,01% of rated load/°C
Environmental protection level	IP67
Connection type	5 metre 4-core screened cable
Wiring connections	+Supply: Red -Supply: Blue +Signal: Green -Signal: Yellow

Dimensions (mm)



Due to continual product development, we reserve the right to alter product specifications without prior notice.

Rating	Part No.	ØD	L1	L2	L3
0,5 to 1500 tonne	LMP-XX-XX	As required	As required	As required	As required

If you are interested or would like to receive a quotation for a custom made loadpin fitting your application, please contact us for the possibilities. If you prefer a standard loadpin, we offer various loadpins with standard dimensions.